

# STAINLESS STEEL HOUSINGS, BRACKETS



## NXWBL

### WALL BRACKET FOR NXL HOUSING

Made of AISI 316L electropolished stainless steel

Load rating: 45kg (99lb)

Length: 596mm (23.5in)

Can be coupled with modular components: NXCOL, NXCW



NXWBL

## NXWBS1

### WALL MOUNT BRACKET

Made of AISI 316L electropolished stainless steel

Load rating: 45kg (99lb)

Dimensions: 371x186mm (14.6x7.3in)

Suitable for: NXCOL, NXCW



NXWBS1

## NXCOL

### POLE MOUNT ADAPTOR

Made of AISI 316L electropolished stainless steel

For pole diameters: from 110mm (4.3in) up to 150mm (5.9in)

Load rating: 50kg (110lb)

Dimensions: 180x196mm (7.0x7.7in)



NXCOL

## NXCW

### CORNER MOUNT ADAPTOR

Made of AISI 316L electropolished stainless steel

Load rating: 50kg (110lb)

Dimensions: 180x291mm (7x11.5in)



NXCW

## TECHNICAL DATA

### NXWBL

#### MECHANICAL

Bracket for NXL

Suitable for: NXCOL, NXCW

Made of AISI 316L electropolished stainless steel

Load rating: 45kg (99lb)

Length: 596mm (23.5in)

Unit weight: 5.5kg (12.1lb)

#### PART NUMBER

NXWBL Stainless steel wall bracket with joint

#### PACKAGE

Model Number	Weight	Dimensions (WxHxL)	Master carton
--------------	--------	--------------------	---------------

NXWBL	5.6kg	19x16x60cm (7.5x6.3x23.6in)	-
-------	-------	-----------------------------	---

### NXWBS1

#### MECHANICAL

Bracket for NTC, NXM36, NXM, NTM, NXW, NTW

Bracket for MVX, MVXT, MVXHD

Suitable for: NXCOL, NXCW

Made of AISI 316L electropolished stainless steel

Load rating: 45kg (99lb)

Dimensions: 371x186mm (14.6x7.3in)

Unit weight: 2.5kg (5.5lb)

#### PART NUMBER

NXWBS1 AISI 316L stainless steel wall bracket with joint

#### PACKAGE

Model Number	Weight	Dimensions (WxHxL)	Master carton
--------------	--------	--------------------	---------------

NXWBS1	2.8kg (6.2lb)	16x18.5x46cm (6.3x7.3x18.1in)	8
--------	---------------	-------------------------------	---

### NXCOL

#### MECHANICAL

Suitable for NXWBS1, NXWBL, NXWBPTH1

Made of AISI 316L electropolished stainless steel

For pole diameters 110-150mm (4.3-5.9in)

Load rating: 50kg (110lb)

Unit weight: 3.3kg (7.3lb)

#### PART NUMBER

NXCOL AISI 316L stainless steel pole adapter module

#### PACKAGE

Model Number	Weight	Dimensions (WxHxL)	Master carton
--------------	--------	--------------------	---------------

NXCOL	3.5kg (7.7lb)	14x25.5x20cm (5.5x10x7.9in)	8
-------	---------------	-----------------------------	---

### NXCW

#### MECHANICAL

Suitable for NXWBS1, NXWBL, NXWBPTH1

Made of AISI 316L electropolished stainless steel

Load rating: 50kg (110lb)

Dimensions: 180x291mm (7x11.5in)

Unit weight: 1.2kg (2.6lb)

#### PART NUMBER

NXCW AISI 316L stainless steel corner adapter module

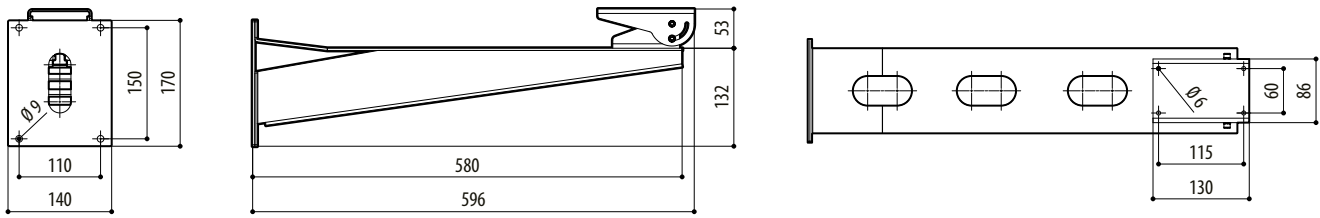
#### PACKAGE

Model Number	Weight	Dimensions (WxHxL)	Master carton
--------------	--------	--------------------	---------------

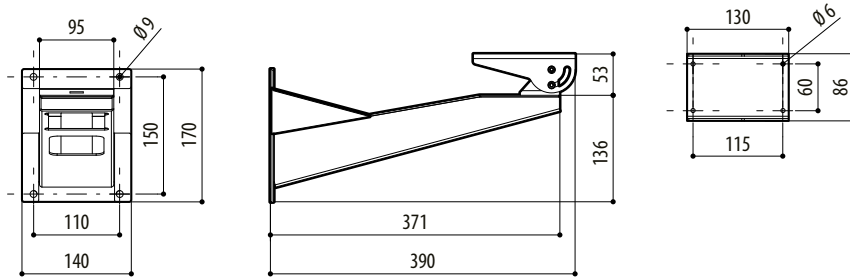
NXCW	1.3kg (2.8lb)	24x32x24.5cm (9.4x12.6x9.6in)	5
------	---------------	-------------------------------	---

## TECHNICAL DRAWINGS

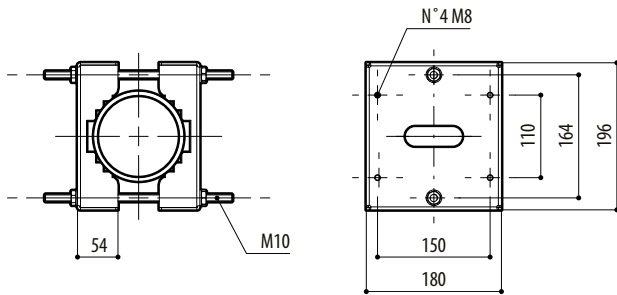
The dimensions of the drawings are in millimetres.



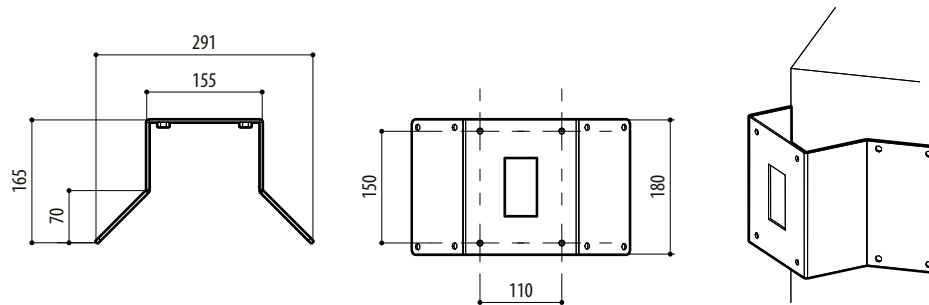
NXWBL



NXWBS1



NXCOL



NXCW